



www.icecompanies.com

Operator & Parts Manual

Professional Backpack Vacuum Cleaner



ID8B

The Peoples
COMPANY

2730310EU
REV.01(05-2014)

INTERNATIONAL CLEANING EQUIPMENT

TABLE OF CONTENTS

SAFETY PRECAUTION.	2
MACHINE OPERATON & STORAGE.	3-4
MACHINE COMPONENTS	5
PARTS LIST	6-10
SPECIFICATIONS	11
WIRING DIAGRAM	12
WEAR&TEAR PARTS	13

SAFETY PRECAUTION



Carefully read and understand this manual before operating this machine and keep it ready to hand.

This machine is intended for commercial use. It is constructed for use in an indoor environment and is not intended for any other use. Use only recommended accessories.

1. Do not operate machine:

- Unless trained and authorized.
- In flammable or explosive areas.
- With a damaged cord or plug
- If not in proper operating condition.
- Unless you have read and understand the operators manual.
- With wet hand.
- In outdoor areas and standing water.

2. Before operating machine:

- Make sure all safety devices are in place and operating properly.

3. When using machine:

- Do not run machine over cord.
- Do not handle plug with wet hands.
- Report machine damage or faulty operation immediately.
- Do not pull machine by cord or plug.
- Keep cord away from heated surfaces.

4. Before leaving or servicing machine:

- Turn off machine.

5. When servicing machine:

- Disconnect battery pack.
- Use manufacturer supplied or approved replacement parts.



Battery and Charging Safety:

1. Before every use-check the batteries for any sign of damage.
2. Do not immerse in any liquid.
3. Do not charge below 0° Celsius.
4. Do not store batteries along with metal objects due to risk of short circuit.
5. Never use non rechargeable batteries in this vacuum cleaner.
6. Use only original batteries and chargers,when replacement batteries and chargers are required.
- 7.If the batteries are leaking,return batteries to a disposal plant or a similar local facility.
- 8.The batteries must be removed from the appliance before the appliance is scrapped.
- 9.Protect the charger against moisture and store it in a dry place.
- 10.Do not use the charger if it is wet.
- 11.The mains voltage available must correspond to the voltage stated on the rating plate of the charger.
- 12.Do not operator charger in explosive environment.
- 13.Do not cover the charger.

Note! The battery performance will increase after the initial charge/discharge cycles.



To avoid electrical shock,please replace the power cord immediately if any damage is being detected. The replacement must be performed only by an authorized person or by our customer service center.

Operation of the Backpack Vacuum

 **Read operators manual thoroughly prior to operating or servicing this machine.**

DRY PICKUP.

- 1) Remove the cover of machine and confirm that there are a cloth of paper filter and a cloth bag or paper bag in place.
- 2) Replace & the latch cover.
- 3) Connect vacuum hose to inlet on the machine body.
- 4) Choose appropriate tool, and attach it to the free end of the hose.
- 5) Place the machine on your back so that the weight of the unit rests on your hips then fasten the waist belt, adjust shoulder strap until secure and comfortable,you may clip the switch box to the waist belt.To start the machine ,turn on the red rocker switch.
- 6) Check the filter bag periodically to see if it is full. For optimal performance, replace the bag when it is 3/4 full.
- 7) To stop the machine at any time, simply turn off the rocker switch.

Instructions for use-batteries

This cleaner is operated by a Lithium battery.One battery is delivered as standard equipment with the machine.There is an LED-indicator in the upper end of the battery.When the battery is charged and running at normal power level the LED-indicator is lit with fixed green light.

When the indicator at the battery starts to flash-less than 5 percent of the battery power remains.There is also a possibility to order an extra battery-by doing this the operating time will be extended to approximately 70 min.

There is a push button at the battery.The purpose of this button is to show the remaining power of the battery if the battery is stored outside the cleaner.Push the button down and the capacity of the battery will be shown at the LED-indicator for 5 seconds.When the indicator at battery starts to flash-less than 5 percent of the battery power remains,and it will soon need to be charged.

Instructions for use-charger

When the LED-indicator at the batteries starts to flash,there is less than 20 percent of the battery power remaining.The battery will run normally until 0% then it switches itself off.Do the following to charge the batteries:

- 1.Connect the main cord of the charger to the charger.
- 2.Connect the cord of the charger to the battery.
- 3.Plug in the other end of the main cord to an electrical wall outlet.

The batteries will be charged automatically.The LED indicator at the battery flashes green to indicate that the battery is being charged.When the battery is fully charged,the LED indicator at the battery will be lit with fixed green light.

Two batteries will be fully charged within 150 minutes.The charged battery can remain on the charger until it is to be used,There is no risk of over-charging.

Battery fuel gauge

The battery fuel gauge indicates the approximate run time remaining on the battery. When the test button is pressed, one to five indicators will light up, indicating the approximate battery charge remaining as follows.

All 5 lights on: Full Charge

4 lights on: 80% Charge

3 lights on: 60% Charge

2 lights on: 40% Charge

1 lights on: 20% Charge

1 lights flash: 5% Charge

MAINTENANCE

To keep the machine performing well for many years, please follow the following maintenance procedures.

 **Always confirm that the machine is disconnected battery prior to performing any maintenance or repairs.**

- 1) Disconnect battery as soon as you are done using it.
- 2) Check power cord for any damage. If any damage is detected, replace the cord immediately.
- 3) Check machine for loose or missing nuts and bolts, and replace as necessary.
- 4) Check the filter, and clean it after each use
- 5) Remove the vacuum hose and check it for any holes and clogs
- 6) Clean the outside of the machine with a mild cleaner

STORAGE

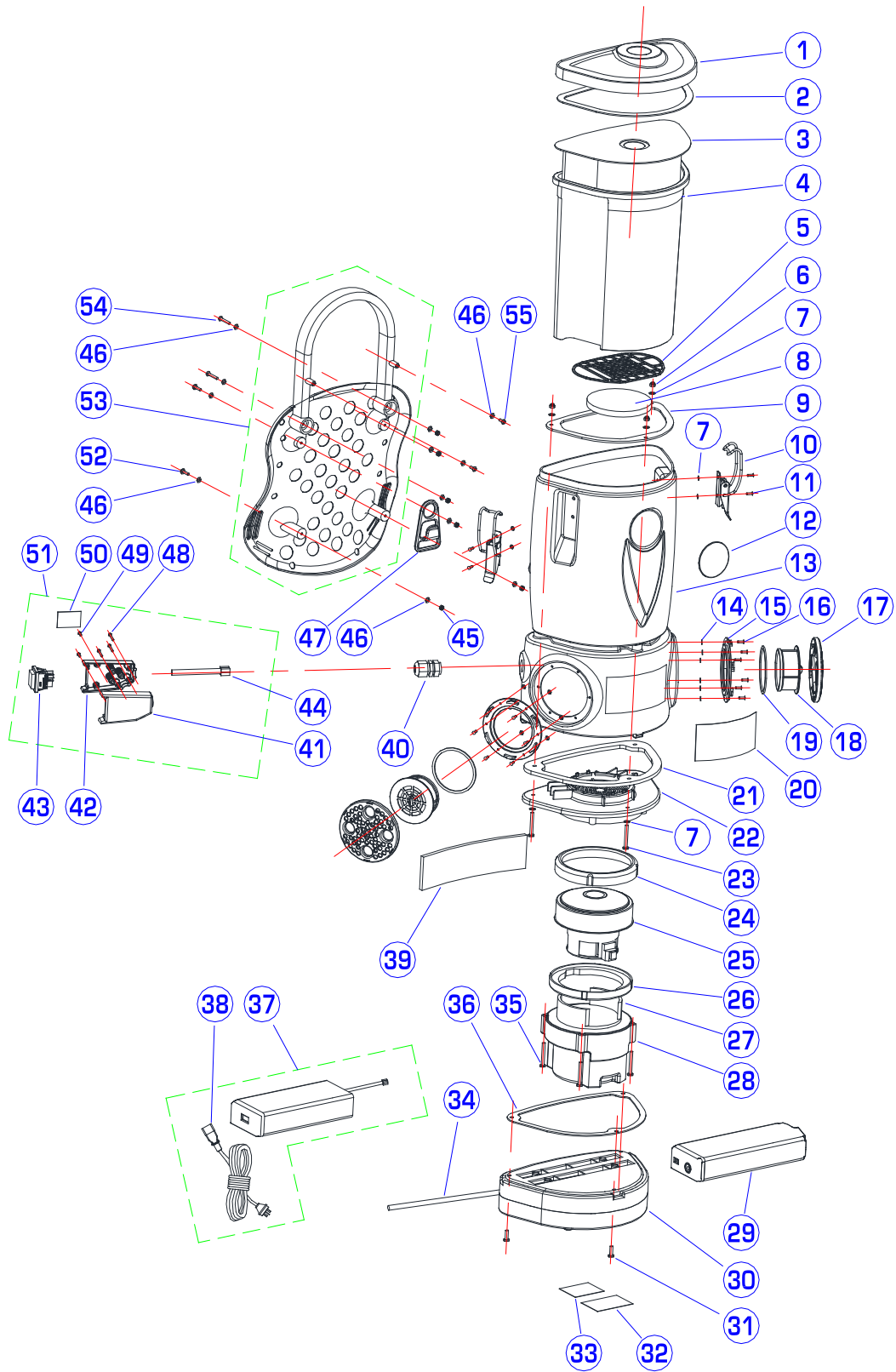
- 1) Store in upright position in a dry area.

MACHINE COMPONENTS

- 1.Cover
- 3.Li Battery
- 5.Exhaust filter
- 7.Tank

- 2.Latch
- 4.Door,Exhaust filter
- 6.On/off switch
- 8.Back rest assy





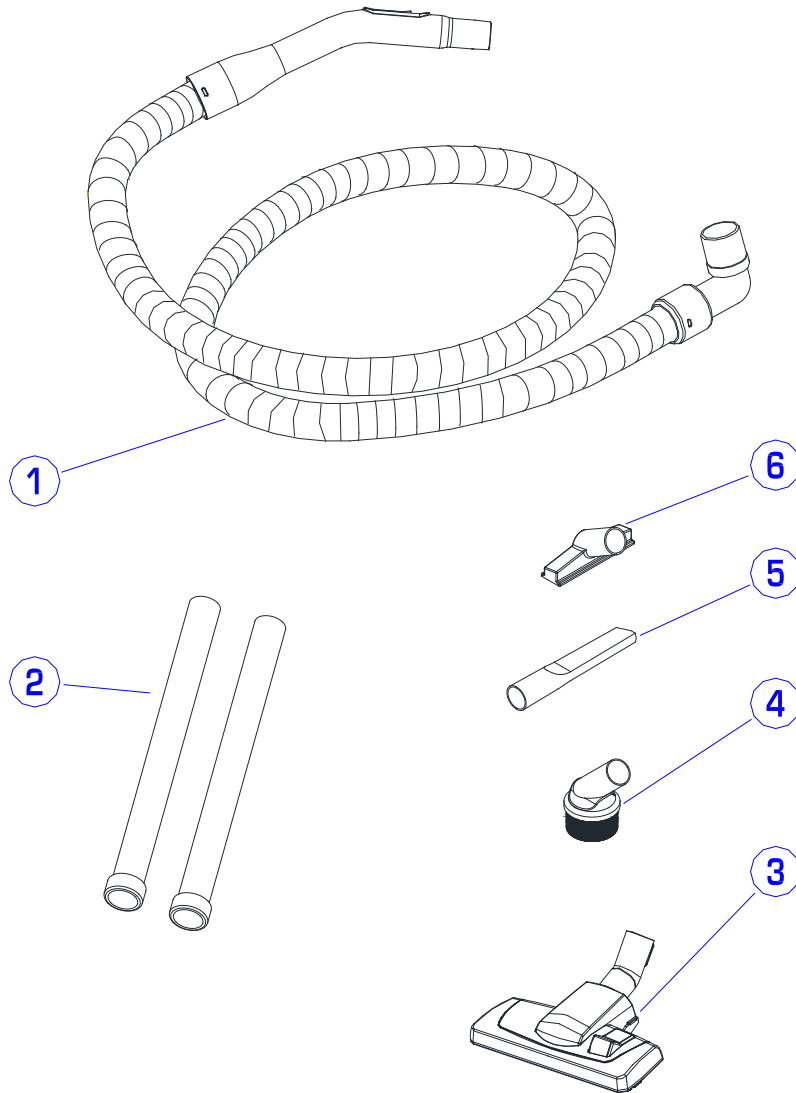
PARTS LIST

DIA NO	PART NUMBER	DESCRIPTION	NO REQ'D
1	2710102	Cover	1
2	2710118	Gasket,Cover	1
3	2710302	Cloth Bag	10/PK
	2710303	Paper Bag(Optional)	10/PK
4	2710301	Cloth Filter	1
5	2710113	Filter Frame	1
6	1123507	Nut, Lock, SST, M5	3
7	1421510	Washer,Plain,Ø5.3XØ10X1	10
8	2710124	Filter	1
9	2710121	Mounting Cover,Motor	1
10	2120205	Catch	2
11	1662512	Rivet,Ø4.8X12	4
12	2010121	Logo	1
13	2710101	Dust Bag Housing	1
14	1421307	Washer,Plain,Ø3XØ7X0.5	12
15	2710119	Housing,Exhaust Filter	2
16	1662310	Rivet,Ø3.2X12	12
17	2710120	Exhaust Filter Door	2
18	2710111	Exhaust Filter(HEPA)	2
19	2710110	Gasket,Exhaust Filter	2
20	2710115	Decal	1
21	2710114	Gasket,Motor Support	1
22	2710103	Motor Support	1
23	1221550	Screw,RHM,M5X50,SST	3
24	2710104	Bottom Gasket,Motor	1
25	2710136	Vac Motor,36V	1
26	2710105	Top Gasket,Motor	1
27	2710132	Silencer,Cover	1
28	2710106	Cover,Motor	1
29	2710137	Battery,4.4AH	1
	2710140	Battery,6.8AH(Optional)	1
30	2710138	Battery Support	1
31	1221520	Screw,RHM,M5X20,SST	3
32	2030414	Warning Decal	1
33	2710311UK	Serial Decal	1
34	2710145	Cord	1
35	1311345	Screw, Ph,ST4.8 X 45	4
36	2710112	Gasket,Bottom Plate	1

PARTS LIST

DIA NO	PART NUMBER	DESCRIPTION	NO REQ'D
37	2710139	Battery Charger(CN plug)	1
	2710139HK	Battery Charger(UK plug)	1
	2710139G	Battery Charger(EU plug)	1
	2710139U	Battery Charger(US plug)	1
38	2710141	Battery Cord	1
39	2710133	Silencer,Dust Bag Housing	1
40	2320403	Strain Relief	1
41	2710201	Front Cover,Switch	1
42	2710202	Back Cover,Switch	1
43	2110108	Switch	1
44	2710134	Cord	1
45	1123406	Nut, Lock, SST, M4	6
46	1411409	Washer,Plain,Ø4XØ9X0.8	14
47	2710127	Cord Wrap	1
48	1321125	Screw, Ph,ST3.5 X 25	3
49	1321110	Screw, Ph,ST3.5 X10	2
50	2710203	Velcro	1
51	2710210	Switch Assy	1
52	1221416	Screw,RHM,M4X16,SST	4
53	2710126	Back Rest Assy	1
54	1221425	Screw,RHM,M4X25,SST	2
55	1321213	Screw, Ph,ST4 X 13	2

ACCESSORIES



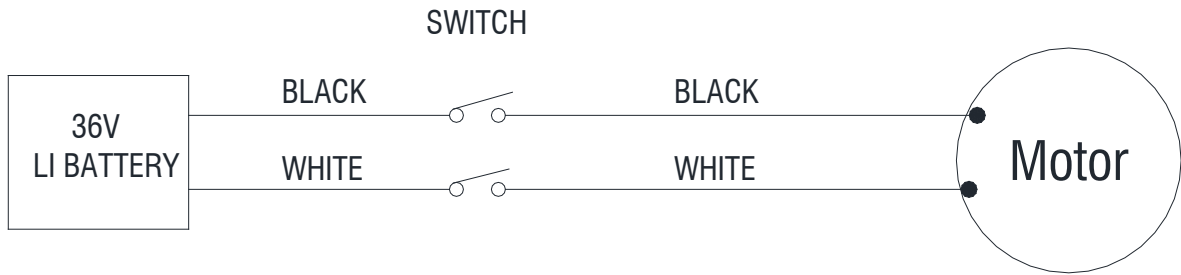
PARTS LIST

DIA NO	PART NUMBER	DESCRIPTION	NO REQ'D
1	2710300	Hose Assy	1
2	2030107	Tube,Sst	2
3	2030220	Combination Tool	1
4	2030104	Dusting Tool	1
5	2030106	Crevice Tool	1
6	2030101	Upholstery Tool	1

TECHNICAL DATA	
Model	ID8B
Voltage	36V
Power	300W
Current	9 A
Capacitor(Tank)	8L
Capacitor(Dust Bag)	6L
Vacuum	1168mmH ₂ O(46")
Flow rate	2330L/Min(82CFM)
Sound pressure level at workstation	57dB(A)
Weight	6.7kg
Hepa	H13
Dimensions	31.5cm(L)X25.6cm(W)X57.7cm(H)

Wiring Diagram

ID8B



WEAR & TEAR PARTS

DIA NO	PART NUMBER	DESCRIPTION	NO REQ'D
1	2710111	Exhaust Filter(HEPA)	2
2	2030101	Upholstery Tool	1
3	2710302	VACUUM BAG,CLOTH	1
4	2030220	Combination Tool	1
5	2030104	Dusting Tool	1
6	2030106	Crevice Tool	1